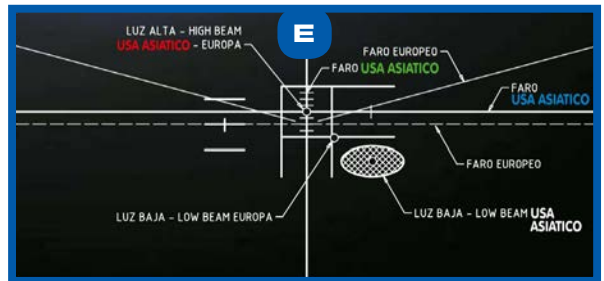
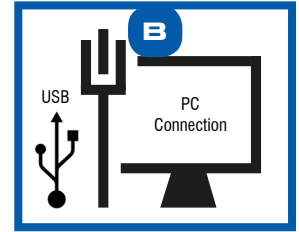


Cod. 03.011.08

HL30 TRONIC/2

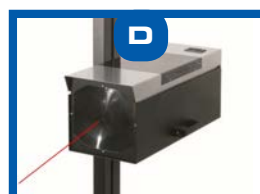
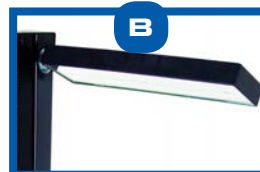
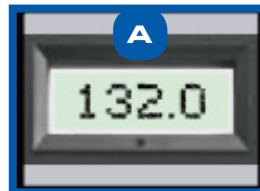
- Registrazione manuale della corretta posizione di ogni tipo di faro, anabbagliante, abbagliante e antinebbia (A)
 - Registrazione automatica dell'intensità luminosa di ogni tipo di faro (A)
 - Software multilingua (A)
 - Uscita USB per collegamento a PC con invio di tutti i dati registrati e possibilità di stampa attraverso il PC (B)
 - Registra targa del veicolo, nome dell'officina, inclinazione utilizzata e altezza del faro
 - Altezza della colonna 1700mm
 - Versione standard con visore a specchio e centratore laser (C)
 - Pannello regolabile, 0 ÷ 4%
 - Può controllare sia i fari Europei che quelli di tipo Americano e Giapponese (E)
-
- Manual adjustment of the correct position for all types of headlight, lower beam, upper beam and fog lights (A)
 - Automatic recording of light intensity of all types of headlight (A)
 - Multilingual software (A)
 - USB port for connection to PC with forwarding of recorded data and print option via PC (B)
 - Records vehicle number plate, name of garage, used inclination and headlight height
 - Height of column: 1700 mm
 - Standard version with mirror visor and central laser pointer (C)
 - Adjustable panel, 0 ÷ 4% (D)
 - Can be used on both European and American/ Japanese headlight types (E)



Cod. 03.011.01

HL26 DL1

- Centrafari meccanico
 - Luxmetro digitale (A)
 - Visore a specchio (B)
 - Asta metrica fissa con molla di richiamo (L=1700 mm)
 - Base fissa
 - Pannello regolabile, 0 ÷ 4% (C)
 - Lente piano convessa ø200
 - Centratore laser (D)
-
- Mechanical headlight beam tester
 - Digital luxmeter (A)
 - Mirror visor (B)
 - Locking clamp and graduate scale with spring inside, L=1700mm
 - Fixed base
 - Adjustable panel, 0 ÷ 4% (C)
 - Semi optical lens ø200
 - Central laser pointer (D)

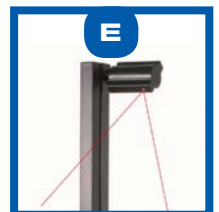


Cod. 03.011.02

HL26DL2

Come HL26DL1, ma con allineamento a fascio laser anziché a specchio (E)

As HL26DL1, but with upper laser alignment instead of mirror visor (E)



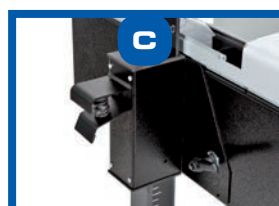
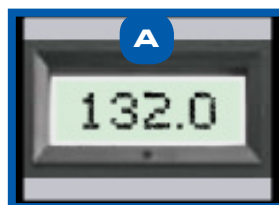
N.B. I modelli 03.011.03 / 03.011.07 (linea touch) sono disponibili a richiesta / Note: 03.011.03 / 03.011.07 models are available on request



Cod. 03.011.05

HL19D

- Centrafari meccanico
 - Luxmetro digitale (A)
 - Visore a specchio (B)
 - Asta di scorrimento (L=1660 mm) con pinza (senza molla di richiamo)- (C)
 - Pannello regolabile (0÷4%)- (D)
 - Lente piano convessa ø200
 - Asta fissa (E)
-
- Mechanical headlight beam tester
 - Digital luxmeter (A)
 - Mirror visor (B)
 - Sliding system L=1660mm with locking clamp (no spring inside)- (C)
 - Adjustable panel (0÷4%)- (D)
 - Semi optical lens ø200
 - Fixed column (E)



Caratteristiche tecniche Technical features	HL19 D Cod. 03.011.05	HL26 DL1 Cod. 03.011.01	HL26 DL2 Cod. 03.011.02	HL30 TRONIC/2 Cod. 03.011.08
Luxmetro digitale Digital luxmeter	✓	✓	✓	—
Luxmetro elettronico Electronic luxmeter	—	—	—	✓
Software multilingua Multilingual software	—	—	—	✓
Uscita usb per scarico dati a pc USB output for data download	—	—	—	✓
Asta metrica fissa L=1660mm Sliding system L=1660mm	✓	—	—	—
Asta metrica fissa con molla di richiamo Sliding system with locking clamp	—	✓	✓	✓
Allineamento a specchio Mirror visor	✓	✓	—	✓
Puntatore laser interno Central laser pointer	—	✓	✓	✓
Allineamento a fascio laser Upper laser alignment	—	—	✓	—
Lente piano convessa ø200 Semi optical lens ø200	✓	✓	✓	✓
Pannello regolabile (0-4%) Adjustable panel (0-4%)	✓	✓	✓	—
Pannello per vetture USA/Jap/EU USA/Jap/EU vehicles panel	—	—	—	✓

Accessori a richiesta Optional accessories	HL19 D Cod. 03.011.05	HL26 DL1 Cod. 03.011.01	HL26 DL2 Cod. 03.011.02	HL30 TRONIC/2 Cod. 03.011.08
Asta metrica in 3 pezzi per riduzione ingombro Sliding system (3 parts) for volume reduction	✓	—	—	—
Copertina antipolvere Anti-dust cover	✓	✓	✓	✓
Allineamento a fascio laser (al posto dello specchio) Upper laser alignment (instead of mirror visor)	✓	✓	—	✓